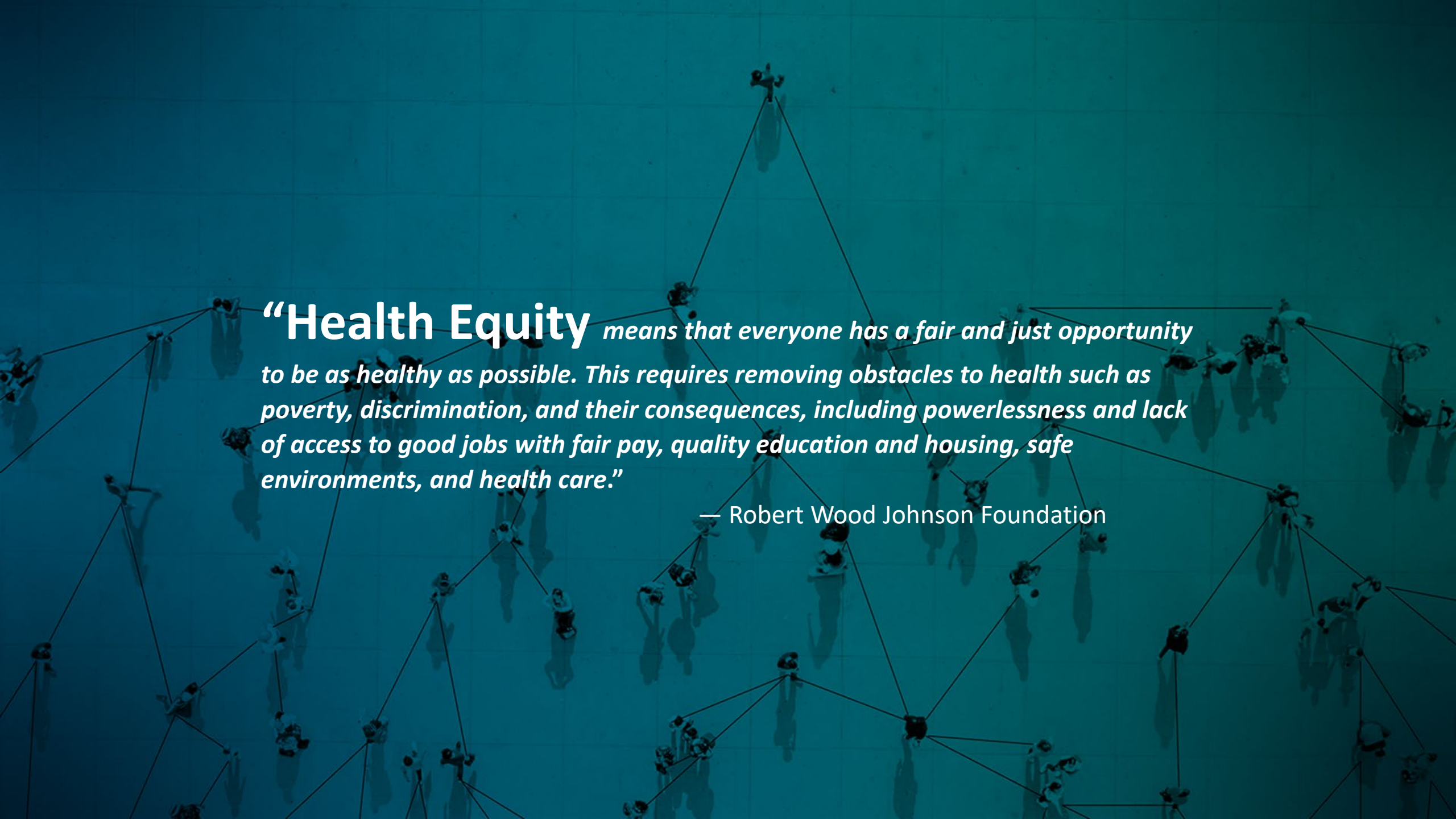


A network of people connected by lines on a grid background. The image shows a large number of small human figures positioned at various points on a light blue grid. These figures are interconnected by a series of thin black lines, forming a complex web or network structure. The overall color scheme is a monochromatic teal or light blue.

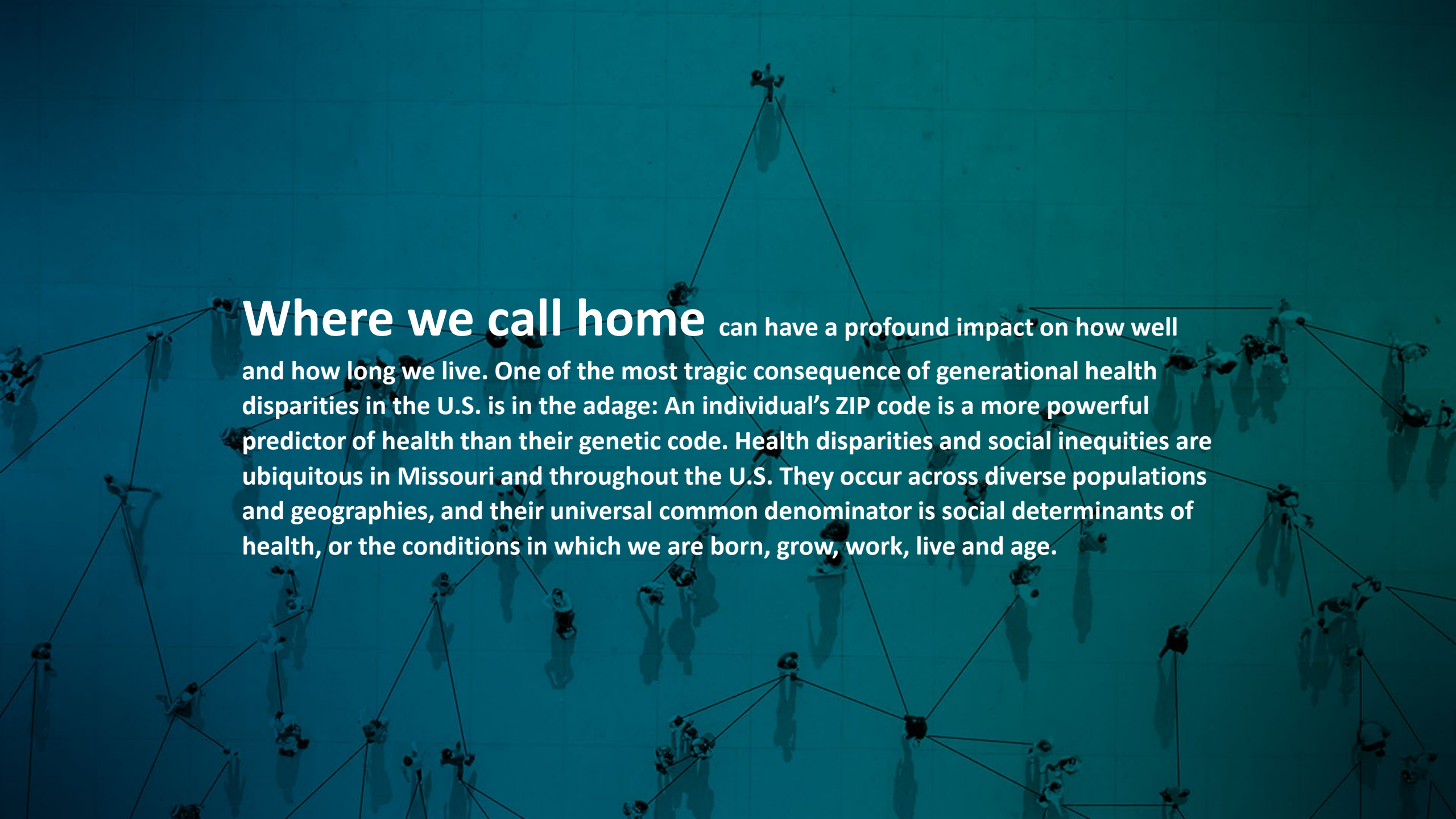
HEALTH EQUITY

MHA
MISSOURI HOSPITAL ASSOCIATION

A network of people connected by lines, symbolizing community and interconnectedness. The background is a teal color with a grid pattern. The people are silhouettes of various individuals, some standing, some sitting, and some in motion, connected by thin black lines that form a complex web. The overall image conveys a sense of global connectivity and shared humanity.

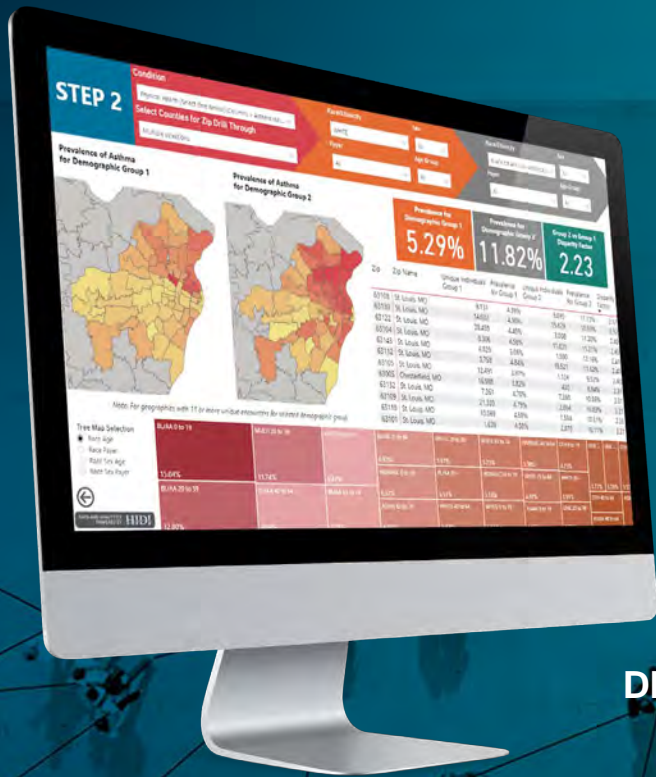
“Health Equity *means that everyone has a fair and just opportunity to be as healthy as possible. This requires removing obstacles to health such as poverty, discrimination, and their consequences, including powerlessness and lack of access to good jobs with fair pay, quality education and housing, safe environments, and health care.”*

— Robert Wood Johnson Foundation

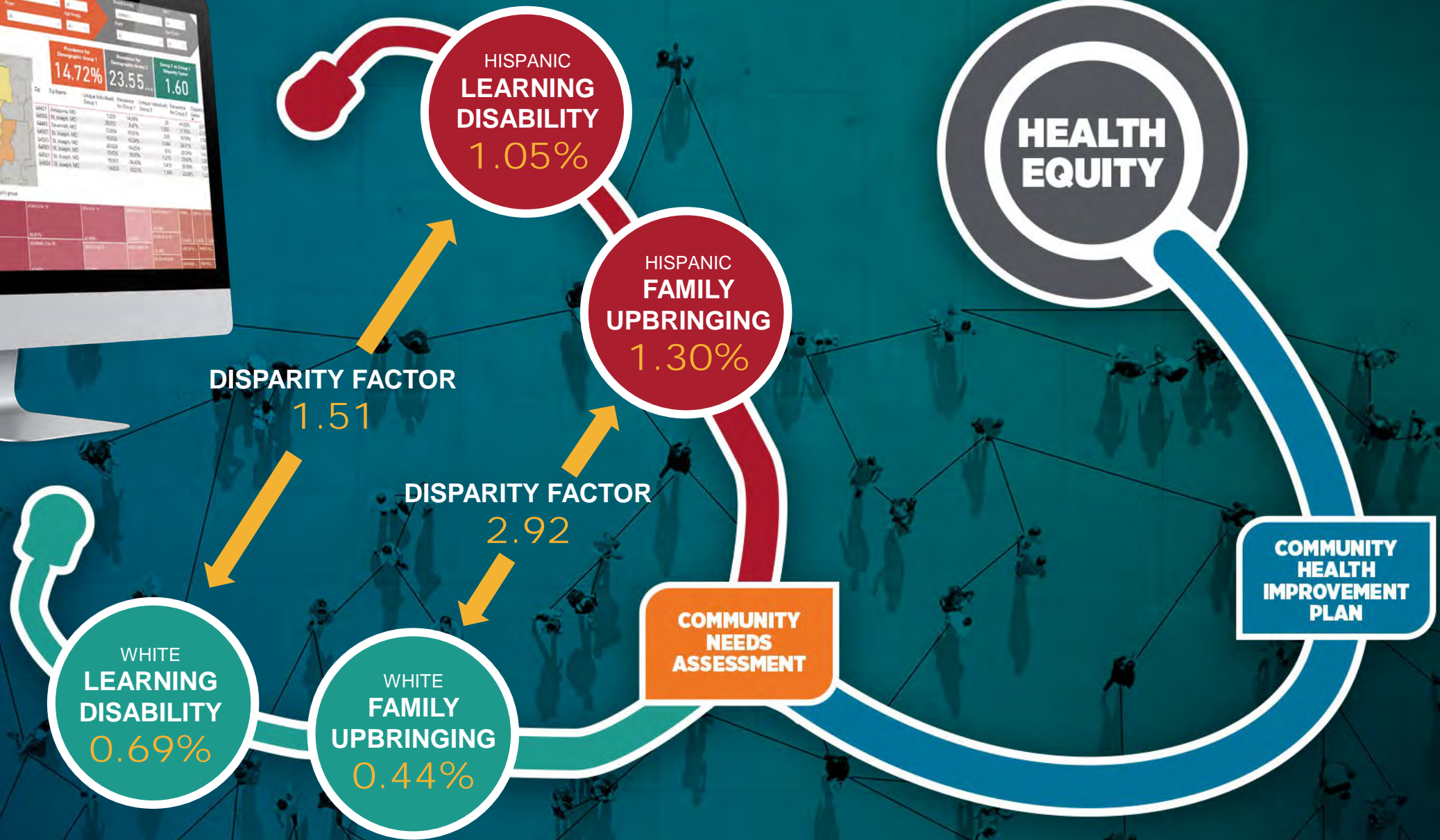


Where we call home can have a profound impact on how well and how long we live. One of the most tragic consequence of generational health disparities in the U.S. is in the adage: An individual's ZIP code is a more powerful predictor of health than their genetic code. Health disparities and social inequities are ubiquitous in Missouri and throughout the U.S. They occur across diverse populations and geographies, and their universal common denominator is social determinants of health, or the conditions in which we are born, grow, work, live and age.

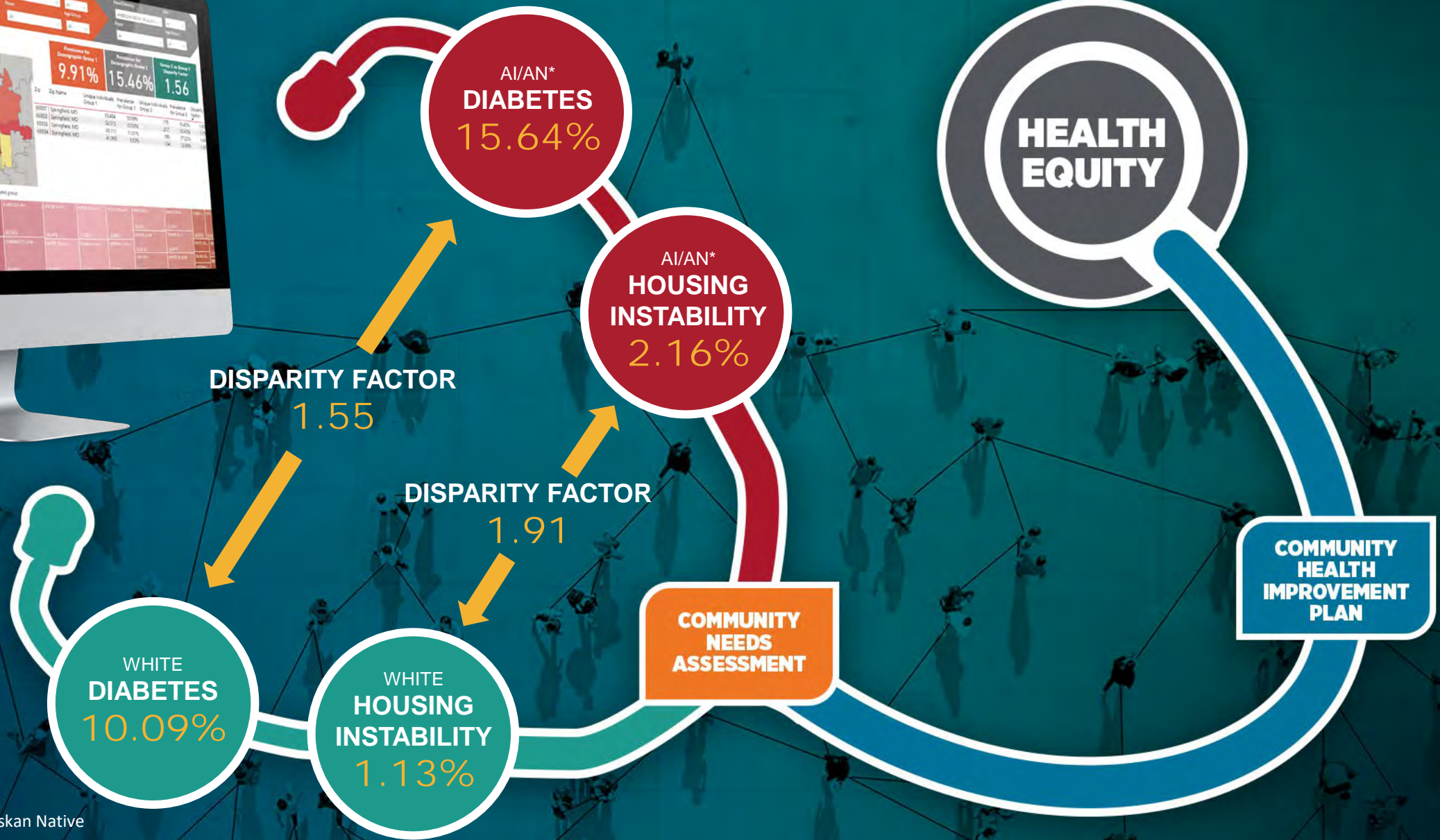
ST. LOUIS CITY AND COUNTY



ANDREW AND BUCHANAN COUNTIES

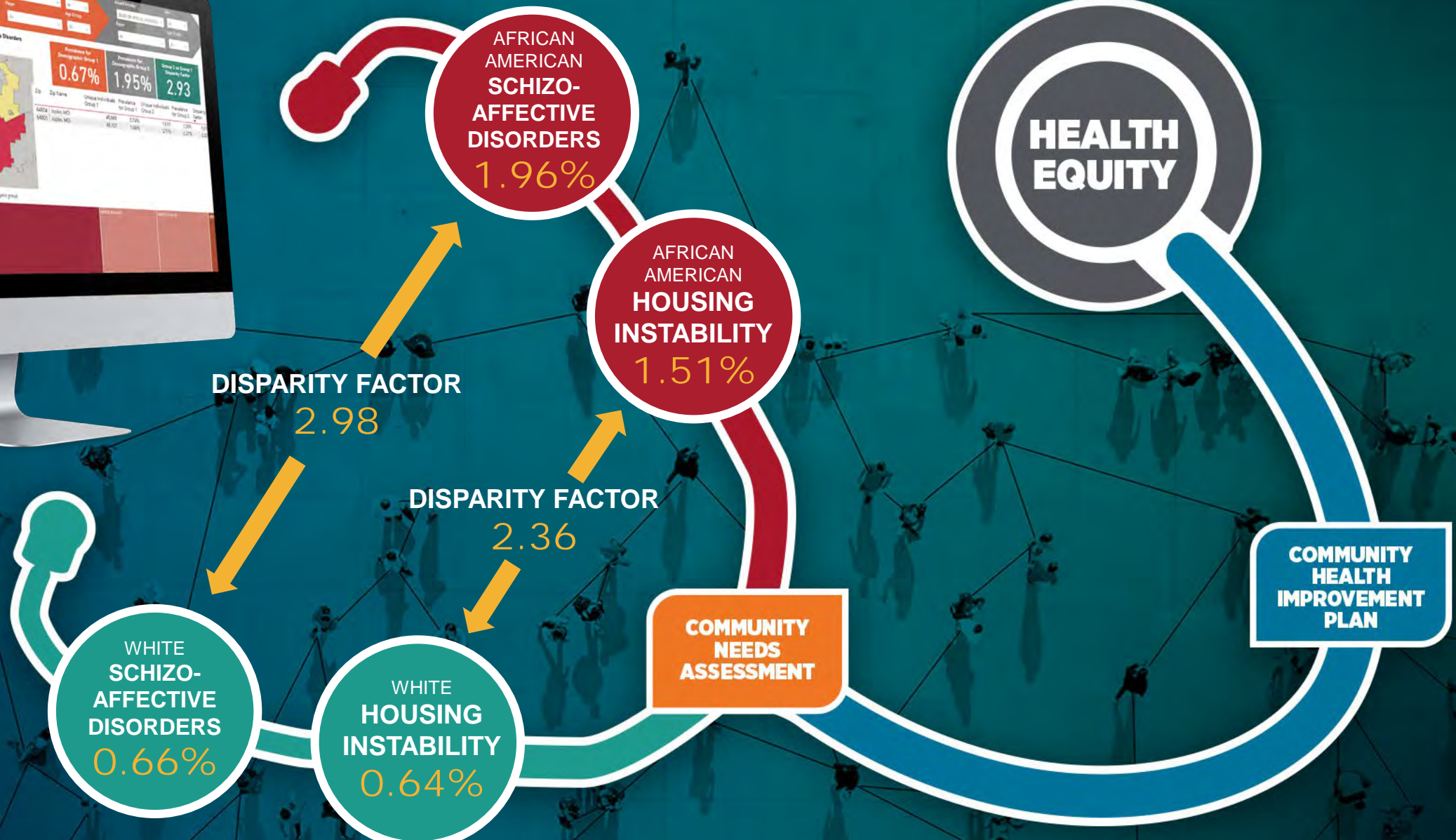
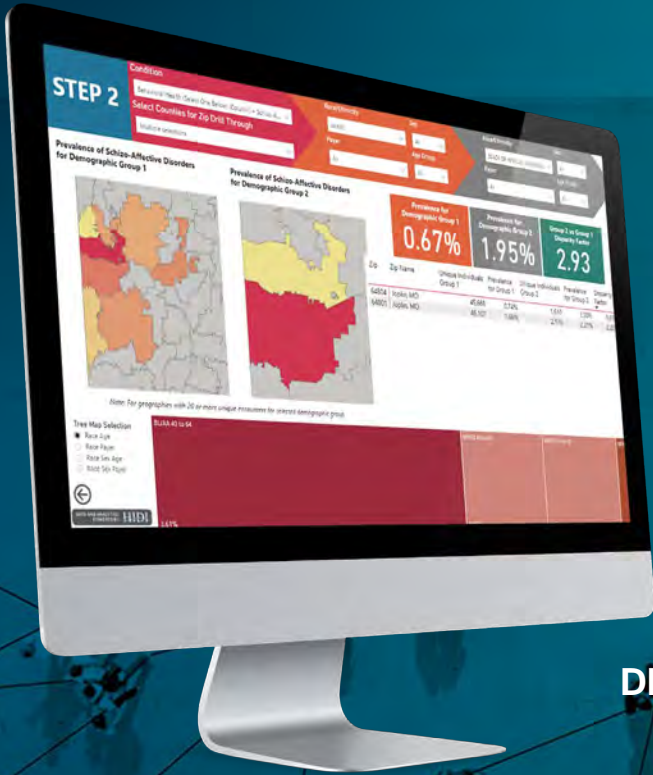


GREENE COUNTY

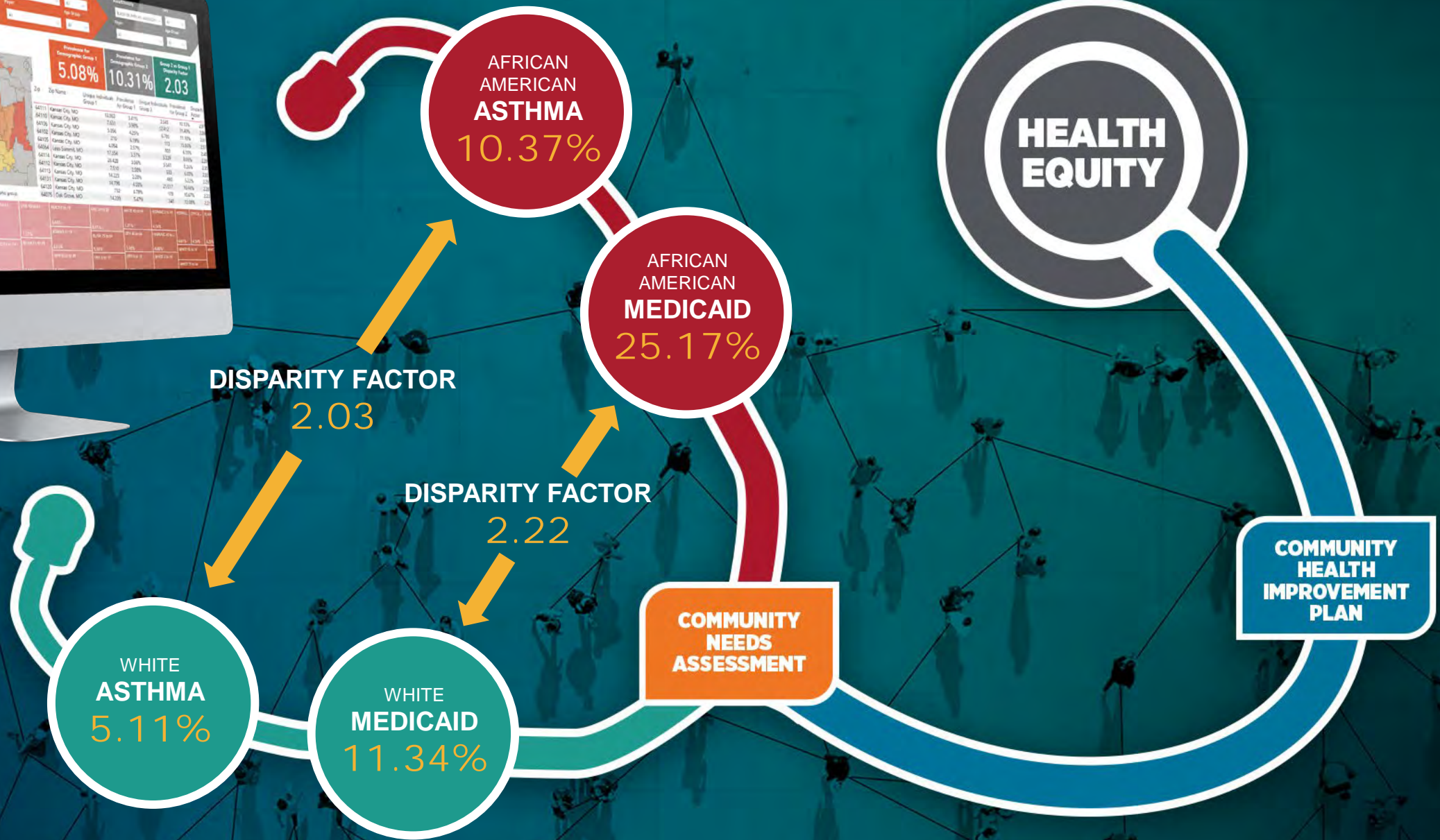


*AI/AN: American Indian or Alaskan Native

JASPER AND NEWTON COUNTIES



JACKSON COUNTY



For more information on this and hundreds of other health factors, outcomes and social determinants of health, visit MHA's Health Equity Dashboards at <https://web.mhanet.com/health-equity-dashboards/>

