

Use of ICS/eICS for Regulatory Surveys

Jackie Gatz, MPA, CHEP
Missouri Hospital Association

Pat Van Hunnik, CHEP
University of Missouri Health Care



Welcome



Today's Objectives

- Provide practical context to the Incident Command System
- Discuss MHA's member-facing solution – eICS
- Demonstrate how one hospital uses the program to manage regulatory surveys
- Note:
 - This is not a comprehensive training on the tool.
 - Training is available upon request



National Incident Management System

What is NIMS?

- National Incident Management System
 - A comprehensive, national approach to incident management
 - Applicable at all jurisdictional levels and across disciplines
 - Lessons learned have shown the need for:
 - Coordinated response
 - Standardization
 - Interoperability

NIMS Concepts and Principles

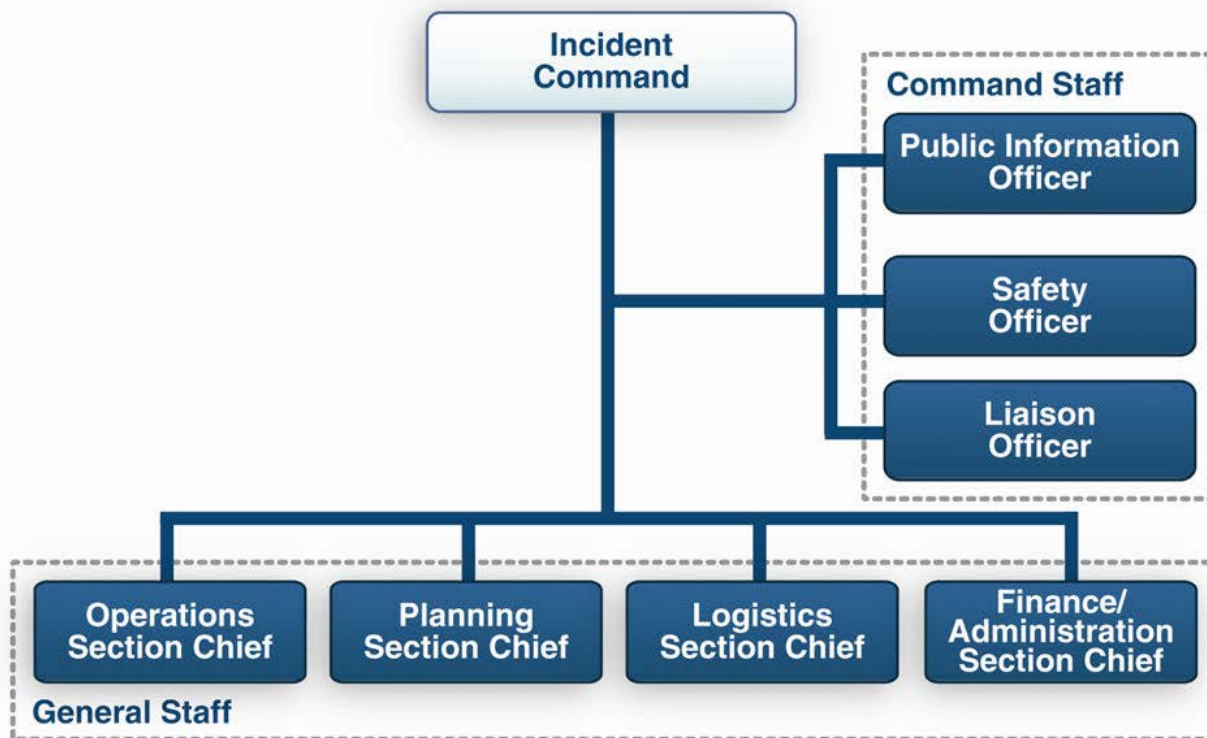
- NIMS is:
 - Flexible to enable all responding organizations to work together
 - Standardized to improve overall response and interoperability
- NIMS Standard Structures
 - **Incident Command System (ICS)**
 - Multiagency Coordination Systems
 - Public Information Systems

Incident Command System

A standardized on-scene emergency management construct specifically designed to provide an integrated organizational structure that reflects the complexity and demands of single or multiple incidents, without being hindered by jurisdictional boundaries.

- Operates within a **common organizational structure**
- Designed to aid in the **management of resources**
- **Organizes field-level** incident operations

ICS Structure



ICS Characteristics

- Modular organization – based on size and complexity, as well as the specific nature
- Chain/Unity of Command – orderly line of authority and designated supervisor
- Manageable Span of Control – adequately supervise, control and communicate
- Common Terminology – plain language



CMS Emergency Preparedness Final Rule

- Implemented **November 15, 2017**
- **482.15 (a)(3) Patient population and available services**
 - The hospital emergency plan must address its patient population, including, but not limited to, persons at-risk.
 - The hospital emergency plan must address the types of services that the hospital would be able to provide in an emergency.
 - **All hospitals include delegations and succession planning in their emergency plan to ensure that the lines of authority during emergency are clear and the plan is implemented promptly and appropriately.**

eICS



Electronic ICS Platform

- MHA maintains a license for EMResource for bed reporting, status updates and diversion management in some metropolitan areas.
- At the direction of Missouri hospitals, MHA worked with vendor to develop eICS in 2010.
- Both EMResource and eICS platform are currently available to all Missouri hospitals at no cost.
- License fees are covered by the U.S. HHS ASPR Hospital Preparedness Program.



Practical Application for Surveys

Pat Van Hunnik, CHEP
University of Missouri Health Care

